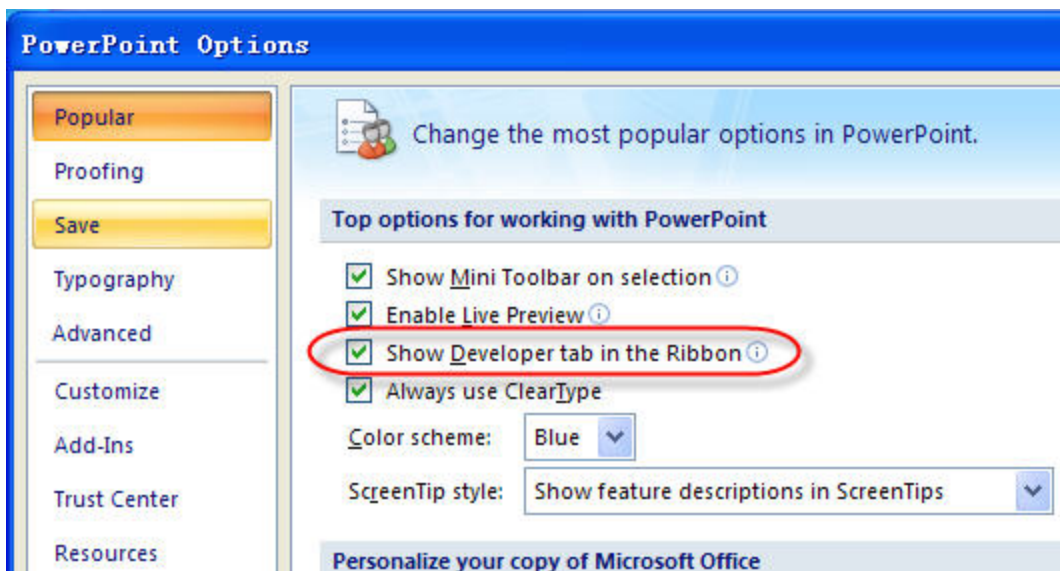
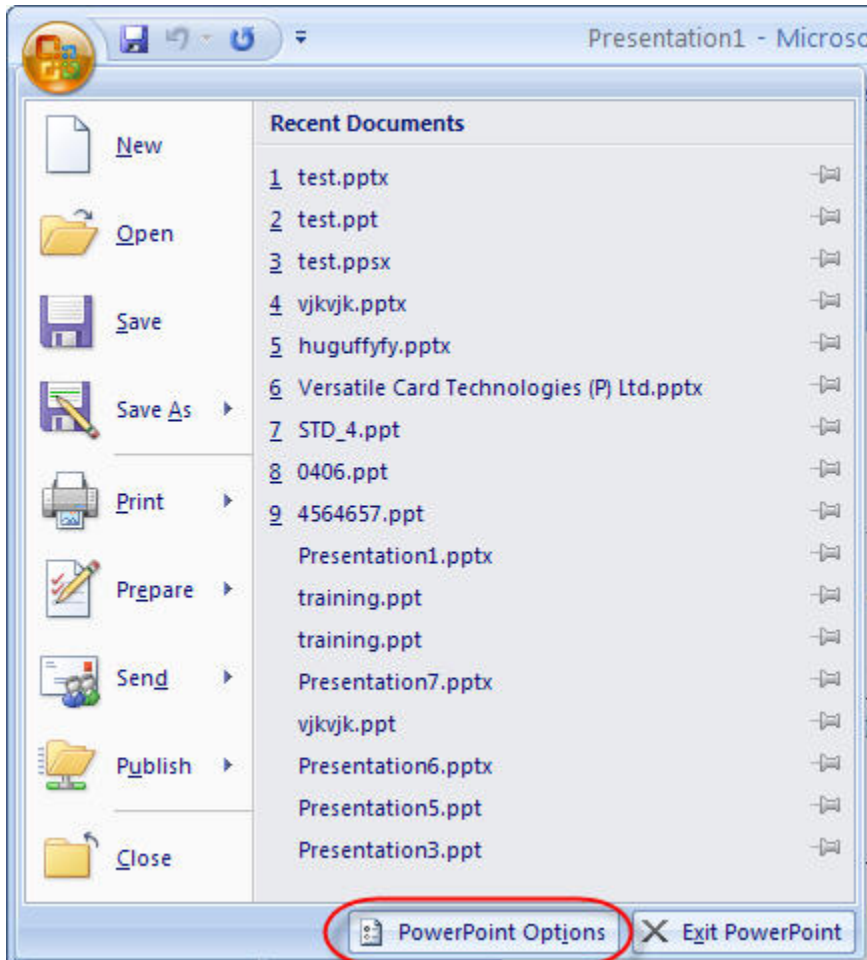


To insert Flash into PowerPoint 2007 Manually

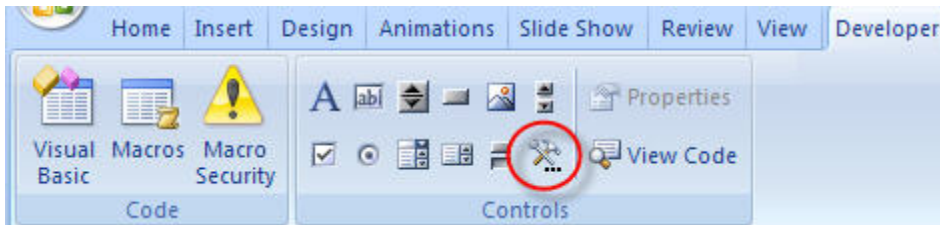
Here is a tutorial video of how to insert flash to PowerPoint 2007. [Click to view the demo>>](#)

Ensure the Flash Player is installed on your computer, and then please follow the steps below:

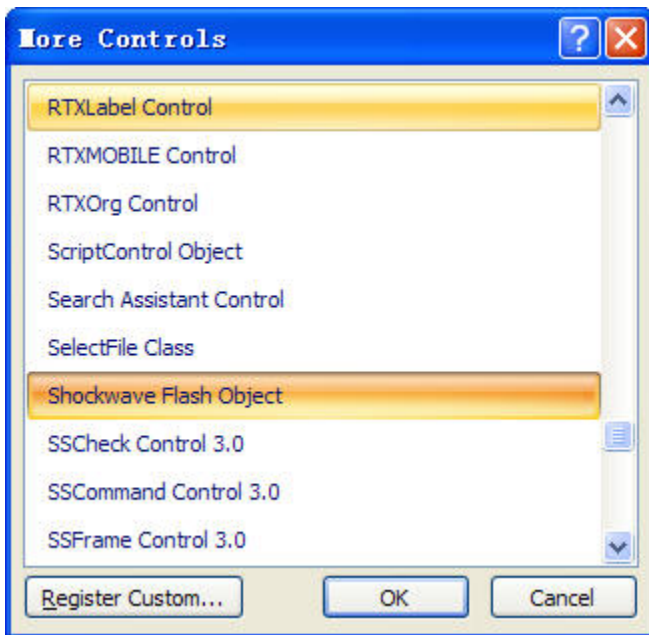
1. Click **Microsoft Office Button** on the top left corner > click "**PowerPoint Options**" at the bottom of the panel > go to the "PowerPoint Options" window > click "**Popular**" on the left column > select "**Show Developer tab in the Ribbon**" on the right column > click "**OK**" at the bottom



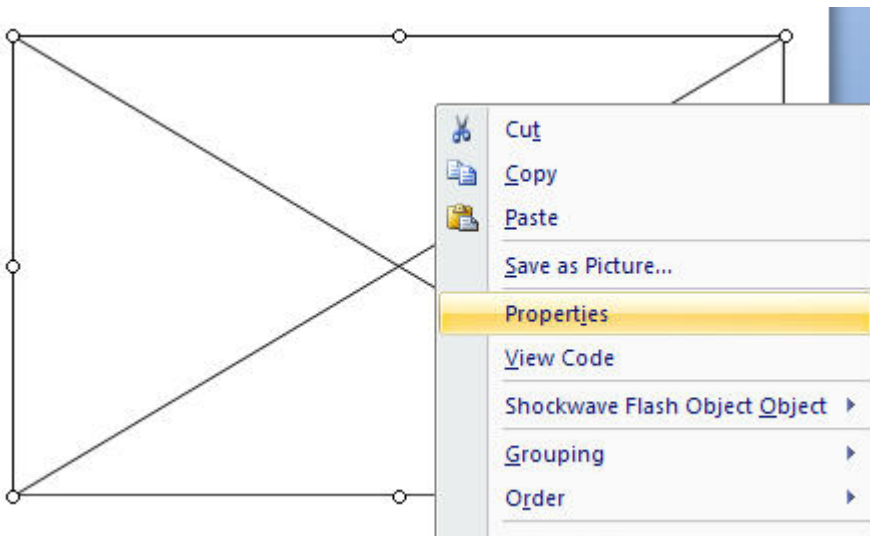
2. On the “Developer” tab > go to “Controls” group > Click the icon of hammer and nail for “More Controls” > go to the “More Controls” window



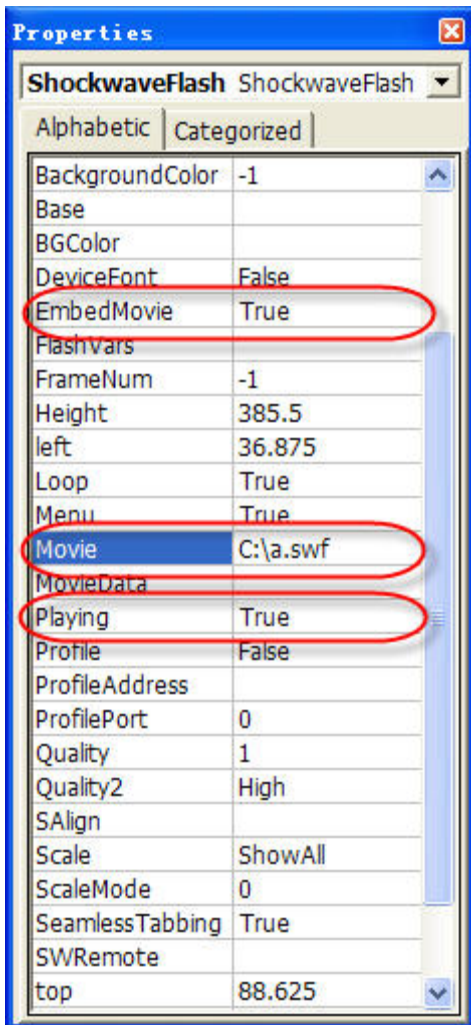
3. On the “More Controls” window > select “Shockwave Flash Object” in the list > click “OK” at the bottom > use your pointer to drag on the slide to draw and resize the control



4. Right click the control you draw > click “Properties” in the right-click menu > go to the “Properties” window



5. On the alphabetic tab > click the “**Movie**” property > **type the full drive path** in the value column (the blank cell next to Movie), including the **file name** (e.g. C:\a.swf) or **URL** (e.g. <http://www.a.com/b.swf>)



6. To make the Flash play automatically when the slide is displayed, set the “**Playing**” property to “**True**”; To embed the Flash into PowerPoint, set “**Embed Movie**” property to “**True**”

7. Finally close the “**Properties**” window and save your presentation.

On the View tab, in the Presentation Views group, you can click Slide Show or press F5 to preview your presentation.